

Pinto Lake: Progress Towards a Healthier Community Lake



Jackie McCloud
Senior Utilities Engineer

Pajaro River Watershed



City of Watsonville

Water: Captured Through Gravity, Only Through Consent

Legend

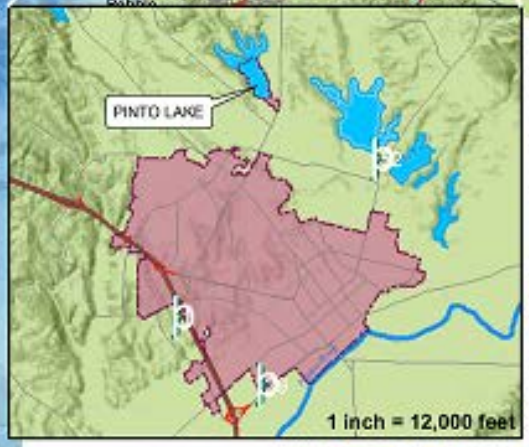
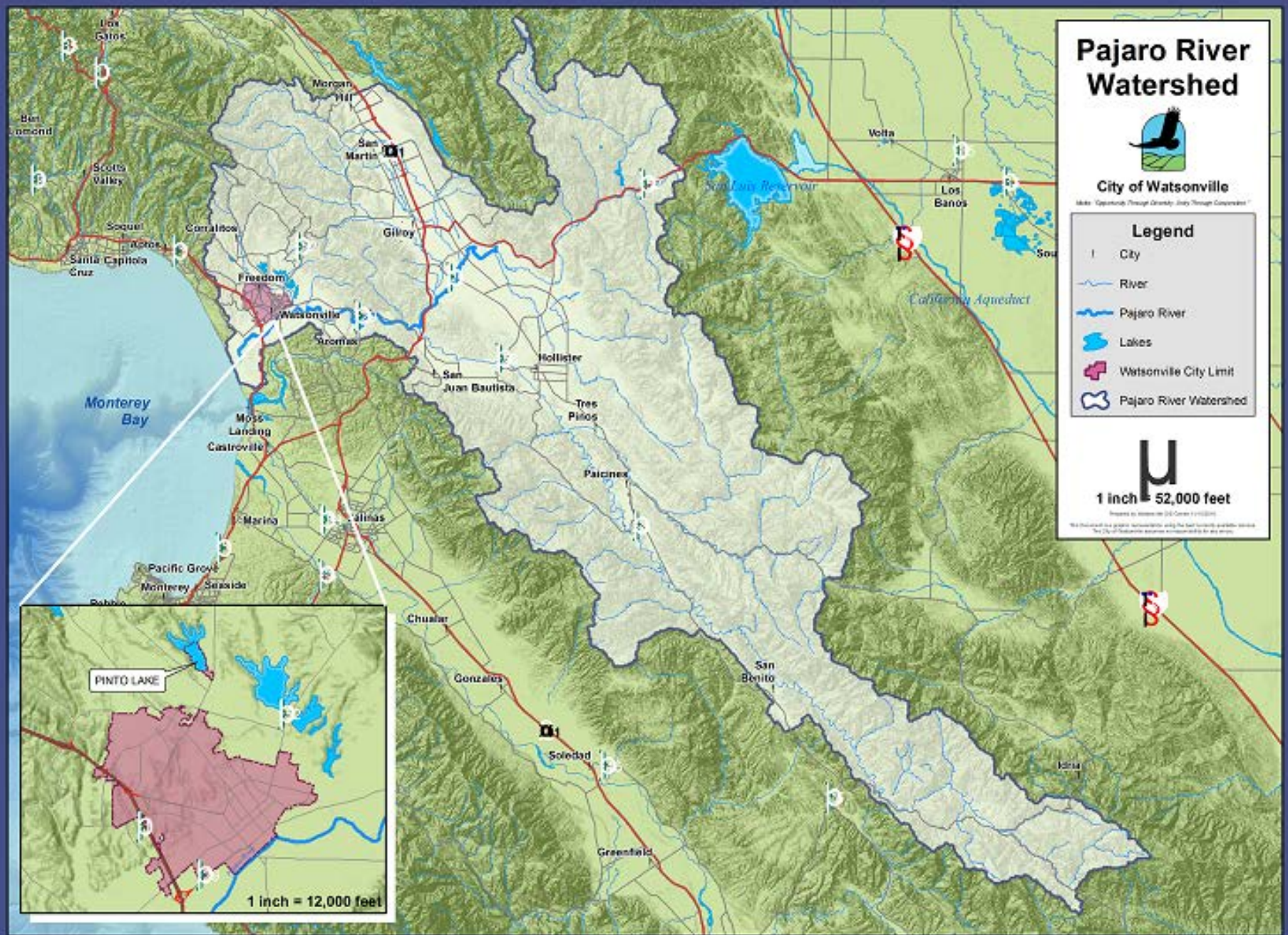
- City
- River
- Pajaro River
- Lakes
- Watsonville City Limit
- Pajaro River Watershed



1 inch = 52,000 feet

Source: USGS (2000)

We warrant no guarantee, representation, or liability for the accuracy, reliability, or completeness of the information provided on this map. The City of Watsonville assumes no responsibility for any errors.



A photograph of Pinto Lake showing a significant blue-green algal bloom. The water is a deep, opaque green, with some areas appearing darker. Several ducks are swimming in the water. The background features a line of trees and a house on a hillside. The foreground shows a concrete ledge or path.

Every Summer and Fall, Pinto Lake
Develops Blue-Green Algal Blooms.
These Blooms Can Produce Toxins

An aerial photograph showing a large, vibrant green algal bloom in a coastal area. The bloom covers a significant portion of the water, extending from the shoreline towards the open sea. The shoreline is visible with some buildings and trees. The water is a deep green color, contrasting with the blue of the open ocean.

What Causes These Blooms?

- *Warm Water*
- *Sunlight*
- *Excess Nutrients*

In-Lake Activities

Multiple management measures implemented pretreatment:

- Carp removal
- Outreach and stakeholder involvement
- Sediment Cores to determine amount of internal nutrient loading



Alum Treatment April 2017



City staff researched:

- **Floating wetlands**
- **Aeration**
- **Alum treatment**
- **Other types of chemical and biological treatment**

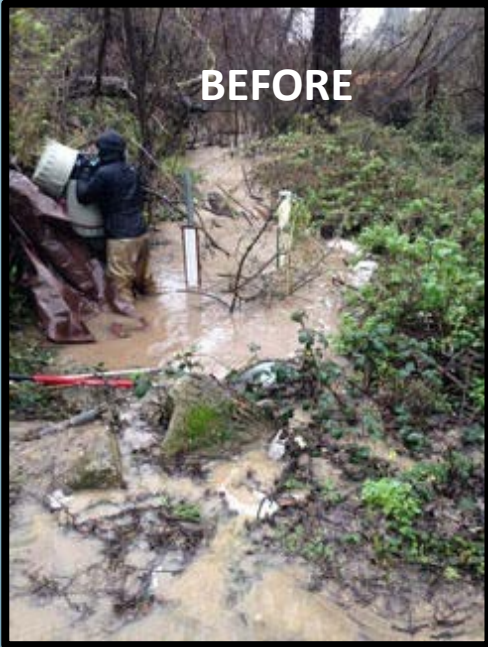
Alum proved to be the best solution for Pinto Lake





Photos courtesy of Catherine Bosley, HAB Aquatics, LLC

Watershed Activities and Improvements



**Amesti
Creek**



**CCC
Creek**



Preliminary Results



Clarity



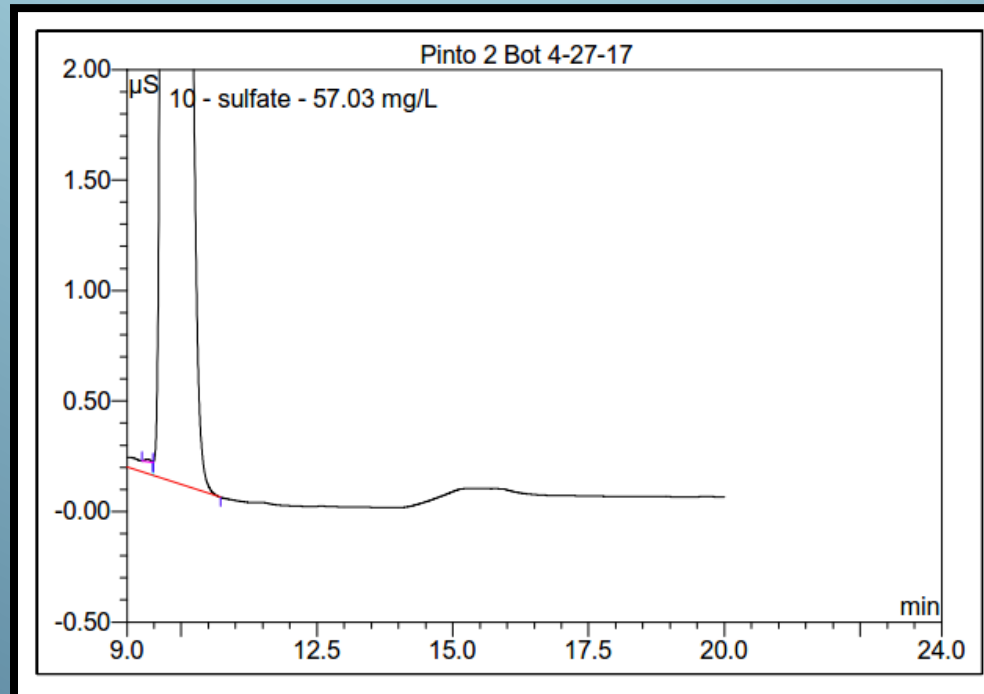
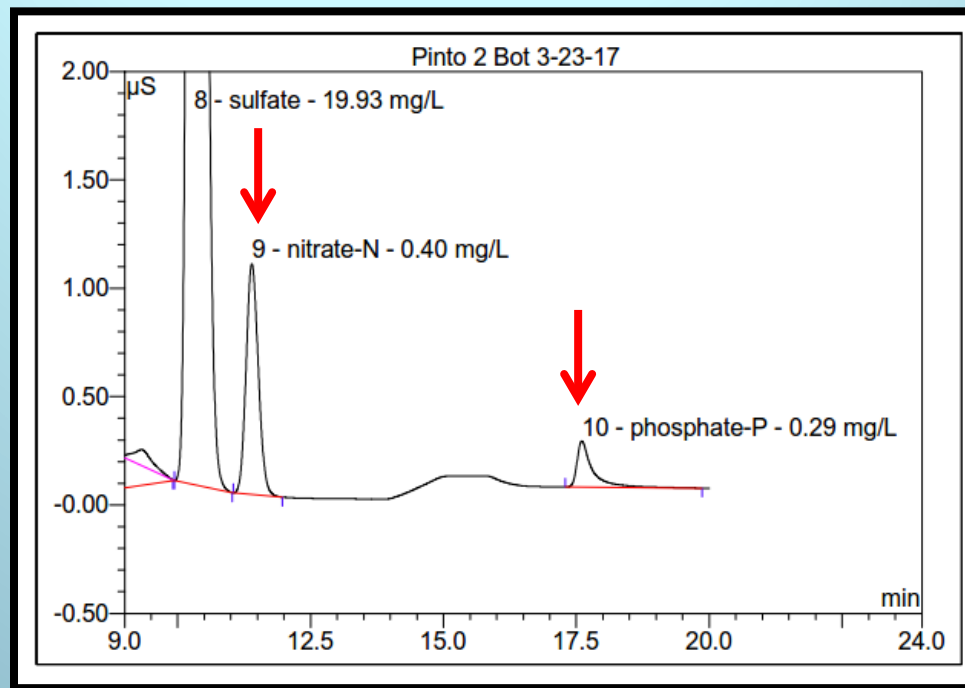
TSS



BEFORE



**AFTER ALUM
TREATMENT**



Lessons Learned



Keys to success:

- Public Outreach & Education
- Collaboration
- Stakeholder involvement



Next steps for Pinto Lake



Photos courtesy of Catherine Bosley, HAB Aquatics, LLC



Thank you for your time!



Photo courtesy of Catherine Bosley, HAB Aquatics, LLC

For additional information on the Pinto Lake Restoration Project:

Jackie McCloud

(831) 768-3172

jackie.mccloud@cityofwatsonville.org