



Share Your Insights

Solid Waste Infrastructure for Recycling

Developing EPA's Recycling Grant Program

Swarupa Ganguli, Acting Chief, Resource Management Branch
Office of Resource Conservation & Recovery, US EPA

May 11, 2022

Session Goals

- Share information about the Infrastructure Investment and Jobs Act, also known as the Bipartisan Infrastructure Law, related to recycling
- Review new EPA grant program:
 - Solid Waste Infrastructure for Recycling
- Gather input on the grant programs development that will inform:
 - Program design
 - Grant implementation

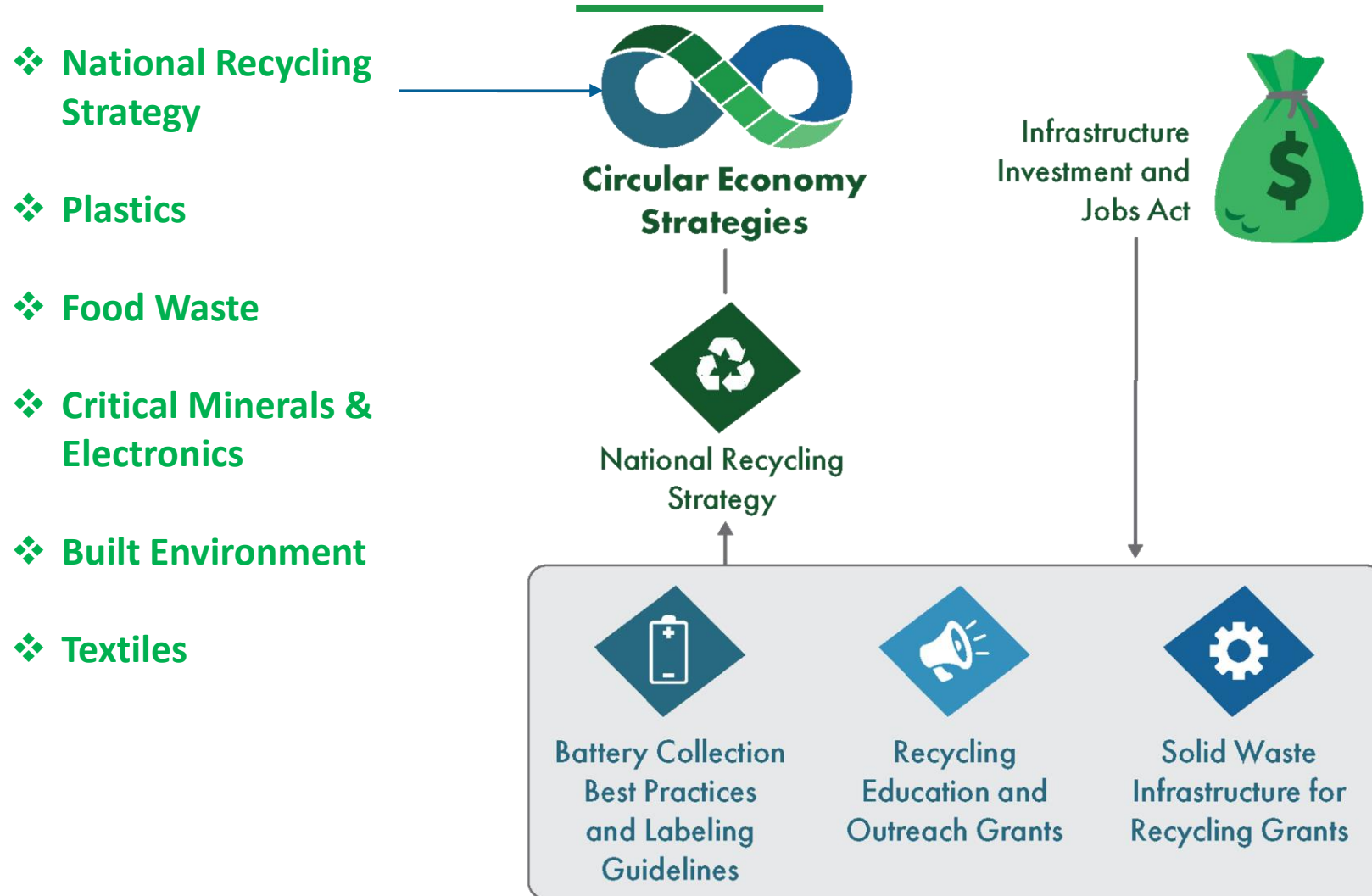


Process Overview

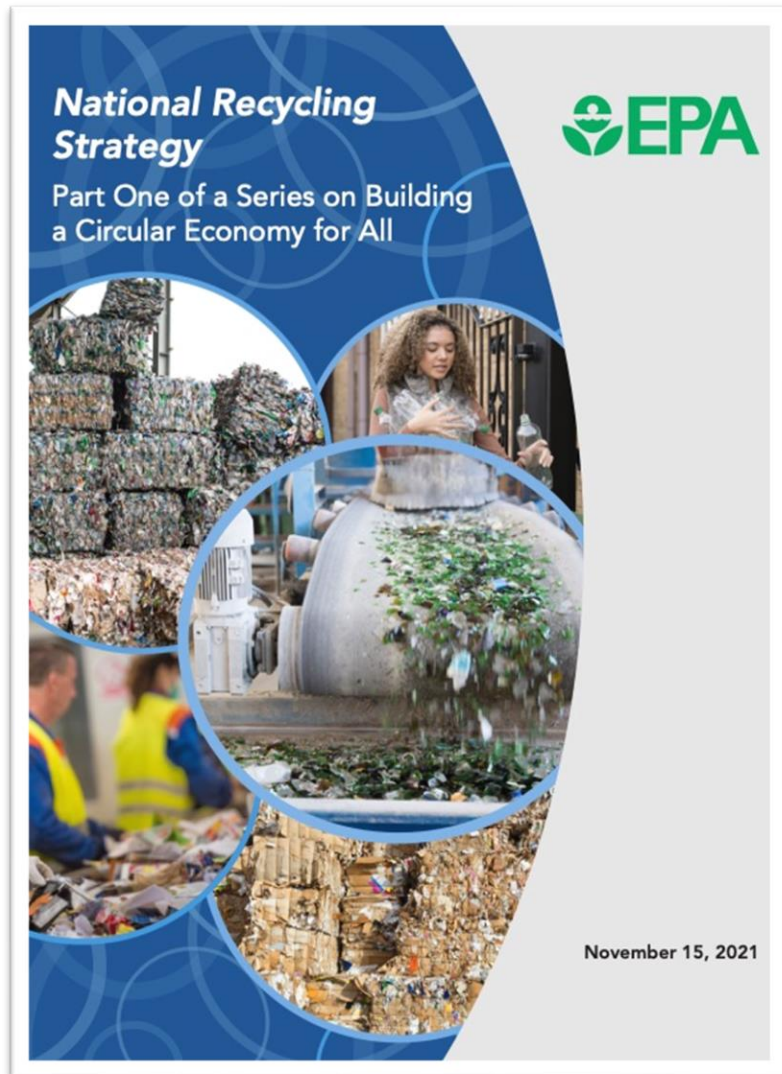
- Feel free to ask clarifying questions about the background of the grant program
- We will ask you key questions about your recycling infrastructure needs to help us with developing the grant programs.



Bipartisan Infrastructure Law Grants in Context



What is the scope of the National Recycling Strategy?



epa.gov/recyclingstrategy

- Focuses on enhancing the national municipal solid waste (MSW) or “household” recycling system
- Identifies stakeholder-led actions to create a more resilient, equitable, and cost-effective MSW recycling system
- Acknowledges recycling alone cannot help us achieve a circular economy
- Commits EPA to developing additional strategies (food waste, plastics)





Background on the Solid Waste Infrastructure for Recycling Grant Program

Drivers, Purpose, Development Process To Date

Recycling Infrastructure Grant Program

Total funding \$275M
Over 5 years



What is the purpose of the Recycling Infrastructure Grant Program?



IMPLEMENT

the Strategy under
Save Our Seas 2.0 Act
section 301(a)



SUPPORT

improvements to
local post-consumer
materials management,
including municipal
recycling programs



ASSIST

local waste management
authorities in
making improvements
to local waste
management systems

Who is eligible for Recycling Infrastructure Grant funding?

- U.S. States and political subdivisions of states. The definition of “State” in SOS 2.0 enables EPA to provide SWIFR grants directly to local governments and other “political subdivisions” of States.
- Puerto Rico, Virgin Islands, Guam, American Samoa, Commonwealth of Northern Mariana Islands
- District of Columbia
- Federally recognized tribal governments
- Former tribal reservations in Oklahoma (as determined by the Secretary of the Interior)
- Alaskan Native Villages as defined in Public Law 92-203
- Intertribal Consortia consistent with the requirements in 40 CFR 35.504(a)



Types of Eligible Activities

EPA is considering a wide range of eligible uses for SWIFR funds including:

- Planning
- Facility-specific feasibility studies
- Infrastructure improvements such as:
 - Equipment upgrades
 - New construction.



Feedback We Have Received So Far Tribal Partners

- Staffing support
- Grant writing
 - Grant implementation
 - Salaries and benefits
- Reduced Administrative burdens
- Many issues specific to recycling in Alaska
- Funding for:
 - Equipment (bailers, compactors, vehicles, trailers, storage buildings, bins, security)
 - Developing and Reaching Markets for recyclable materials
 - Support for transportation and transportation costs (especially in rural areas and for batteries)
- Technical Assistance
 - Needs assessment
 - Grant application process
 - Program Implementation
 - Writing contracts





Discussion:

Your Program Issues, Needs, and Priorities

Discussion Questions

1. What are your top needs and challenges related to **solid waste management, waste management infrastructure, and recycling infrastructure**?
2. What activities should EPA consider for funding eligibility when completing the design of the grant program and **what are the associated estimated costs**?
3. What data point or indicator do you use to **measure solid waste management and recycling program success**?
4. What limitations do you face in supporting an **effective and efficient recycling program**?
5. What types of **regional cooperation would be useful to facilitate recycling**?
6. What activities should EPA consider for funding eligibility when completing the design of the grant program and **what are the associated estimated costs**?
7. What are the **obstacles you face when applying to grant programs** and managing grant funds?



For More Information

Sign up to ***Stay Connected*** to learn more about grants, future strategies and reports:

<https://www.epa.gov/recyclingstrategy/forms/stay-connected>

The Bipartisan Infrastructure Law: Transforming the U.S. Recycling and Waste Management

<https://www.epa.gov/rcra/bipartisan-infrastructure-law-transforming-us-recycling-and-waste-management>

Training for Grant Applicants:

<https://www.epa.gov/grants/recipient-training-opportunities>

Questions?

Email: SWIFR@epa.gov



EPA's Next Steps

HOST:

Listening sessions to collect stakeholder and public input to inform grants

ISSUE:

Request for Information

RELEASE:

Information on how to apply for the grants





THANK YOU!

