



# SNEP Steering Committee Meeting

October 21, 2024

Website: [www.epa.gov/snep](http://www.epa.gov/snep) | Email: [SECoastalNE@epa.gov](mailto:SECoastalNE@epa.gov)

# Agenda

- 9:45-10:00 Meet and Mingle
- 10:00-11:00 Introductions and Partner Updates
- 11:00-12:00 Review FY25 Workplan and Discuss Budget Priorities
- 12:00-1:00 Lunch (on your own)
- 1:00-1:15 Report out: Monitoring Subcommittee
- 1:15-1:30 Report out: Ecosystem Services Subcommittee
- 1:30-1:45 State of the Region Report
- 1:45-2:45 Building Resilience to Climate Impacts in the Region
- 2:45-3:00 Next Steps

# Introductions and Partner Updates

10:00-11:00

# FY25 Workplan Overview

## SNEP FY25 Workplan Draft 10-16-2024

### SNEP Strategic Workplan – Plan Goal

*Implement collaborative, innovative approaches for improving environmental conditions in communities affected by climate change, nutrients and pathogens, land development, economic development, and the burdens of inequality.*

The following workplan is in draft for Steering Committee input

## SNEP Strategic Workplan - FY25 Proposed Budget Allocation Table

*A comprised summary of new FY25 tasks and proposed FY25 budget allocation.  
Highlighted tasks need further discussion and/or input from the SNEP Steering Committee.*

New FY25 Tasks	Project Description	Strategic Plan Goal and Priority Action	FY25 Proposed Budget Allocation
<b>New Cooperative Agreements</b>			
SNEP Opportunity to Advance Resilience (SOAR)	Third SOAR solicitation <ul style="list-style-type: none"> <li>Develop/ release 2025 RFP</li> <li>Select and award grants to third round of projects</li> </ul>	G3 P1, P3, P4	\$1.42M
Buzzards Bay NEP Support	Support new and existing efforts of the BBNEP <ul style="list-style-type: none"> <li>New regional grants to support the BBNEP mission</li> </ul>	G1, G2, G3 P1-P5	\$250K
Narragansett Bay Estuary Program Support	Support new and existing efforts of the NBEP <ul style="list-style-type: none"> <li>New regional grants to support the NBEP mission</li> </ul>	G1, G2, G3 P1-P5	\$250K
New EPA Direct FY25 Grants (Base)	<i>Tentative, if funding permits, to be determined with Steering Committee feedback</i>	TBD	<i>TBD (\$417K)</i>
New EPA Direct FY25 Grants (BIL)	<i>Tentative, if funding permits, to be determined with Steering Committee feedback</i>	TBD	<i>TBD (\$1.1M) (leftover FY24 + FY25 + FY26 = \$2.2M*)</i>
<b>Incremental Cooperative Agreements</b>			
Pilot Watershed Initiative Grants (PWI)	Five (5) ongoing pilot watershed grants <ul style="list-style-type: none"> <li>Evaluation of technologies and approaches for common challenges in region</li> <li>Metrics-based final reports</li> </ul>	G1, G2, G3 P1, P2, P4, P5	\$750K (\$150K per watershed)
SNEP Network (FY25-FY28 funding)	SNEP technical assistance program <ul style="list-style-type: none"> <li>New award kicks off in FY25</li> </ul>	G1, G2, G3 P1, P3, P5	\$1.75M
SNEP Watershed Implementation Grants (SWIG)	RAE SWIG grant and subaward program, identify reporting mechanisms/improvements <ul style="list-style-type: none"> <li>~10-15 new subawards</li> </ul>	G1, G2, G3 P2, P3, P4, P5	\$2.8M
<b>Contract Task Orders</b>			
Monitoring Subcommittee FY25 Task Order	Task Order to develop an QAPP Database for the SNEP region <ul style="list-style-type: none"> <li>Develop an online database to allow the public to access approved quality assurance project plans (QAPPs).</li> <li>Tool will allow SNEP team to add additional QAPPs to database in the future.</li> </ul>	G1, G2 P1, P4	<i>TBD</i>

## SNEP Strategic Workplan - FY25 Proposed Budget Allocation Table

*A comprised summary of new FY25 tasks and proposed FY25 budget allocation.  
Highlighted tasks need further discussion and/or input from the SNEP Steering Committee.*

SNEP EcoHealth Tracking Tool - Final Steps FY25 Task Order	Task Order to finalize the EcoHealth Tracking Tool for the SNEP Region and revise for 508 compliance	G1, G2 P1, P4	<i>TBD</i>
<b>Interagency Agreements</b>			
USGS	<i>To be determined...</i>	TBD	<i>TBD</i>
<b>SNEP Admin</b>			
SNEP Strategic Plan 2026-2036	Update current SNEP 2021-2025 Strategic Plan <ul style="list-style-type: none"> <li>• Identify timeline for further updates made to SNEP Strategic Plan (5-year review if needed, 10-year update)</li> <li>• Final Draft of SNEP Strategic Plan for 2026 - 2036</li> </ul>	G1, G2, G3 P4, P5	\$0
2025 SNEP Forum Venue	Secure venue for 2025 SNEP Forum	G1, G2, G3 P4, P5	<i>TBD</i>
Host 2025 SNEP Forum	Focus: Input on next SNEP Strategic Plan <ul style="list-style-type: none"> <li>• Identify themes, planning committee members, venue, and schedule of meetings.</li> <li>• Forum planning team development</li> <li>• Develop and finalize agenda for ~6 hour in-person event.</li> <li>• Host event</li> </ul>	G1, G2, G3 P2, P4, P5	\$0
Host Workshop	<i>To be determined based on identified need...</i>	TBD	<i>TBD</i>
Host Workshop	<i>To be determined based on identified need...</i>	TBD	<i>TBD</i>
<b>Administrative Costs</b>			
Salary, Benefits, and Overhead (Base + BIL)	SNEP Team (includes full and part-time)	G1, G2, G3 P1-P5	<i>TBD \$488K (Base) TBD \$410K (BIL)</i>
Travel	SNEP Team (includes full and part-time)	G1, G2, G3 P1-P5	<i>\$10K</i>
<b>Total Estimated FY25 Budget Allocation (to be determined by Congressional Appropriation)</b>			<i>TBD (\$10M)</i>

# FY25 New Project Ideas – Base and BIL

- Stormwater and Natural Infrastructure Grants
- Innovation grants (technologies and techniques)
- New Pilot Watershed with green infrastructure focus
- Direct awards to existing Pilot Watersheds
- Cape and Islands subregional planning organization (parallel to BBNEP and NBEP support)
- Monitoring for representative waterbodies in the SNEP Region
- Permeable reactive barrier effectiveness research
- Other?

# FY25 New Project Priorities - Activity

New EPA Direct FY25 Grant Ideas for Base funds - *TBD (\$417K)*

- Innovation grants (technologies and techniques)\*
- Monitoring for representative waterbodies in the SNEP Region
- Cape and Islands subregional planning organization (parallel to BBNEP and NBEP support)
- Permeable reactive barrier effectiveness research\*

\*Could also be funded with BIL funds

*Please place your stickers on the idea you like best, or add an idea to the chart in the middle of the room*



# FY25 New Project Priorities - Activity

New EPA Direct FY25 Grant Ideas for BIL funds - *TBD (\$1.1M FY25)*  
*(leftover FY24 + FY25 + FY26 = \$2.2M\*)*

- Innovation grants (technologies and techniques)
- Stormwater and Natural Infrastructure Grants
- New Pilot Watershed with green infrastructure focus
- Direct awards to existing Pilot Watersheds

*Please place your stickers on the idea you like best, or add an idea to the chart in the middle of the room*



# Lunch Break

12:00-1:00PM

Local recommendations:

Buttercup Café

Nirvana Coffee Co

Barnstable Market

# Monitoring Subcommittee Activities

- Update on SNEP EcoHealth Tracking Tool
- Update on increasing regional data availability
- QAPP assistance tool



- How can we make it easier to get data into WQX
  - CEI WQX contract.
- How can we get data out?
  - SNEP ETT



# SNEP EcoHealth Tracking Tool



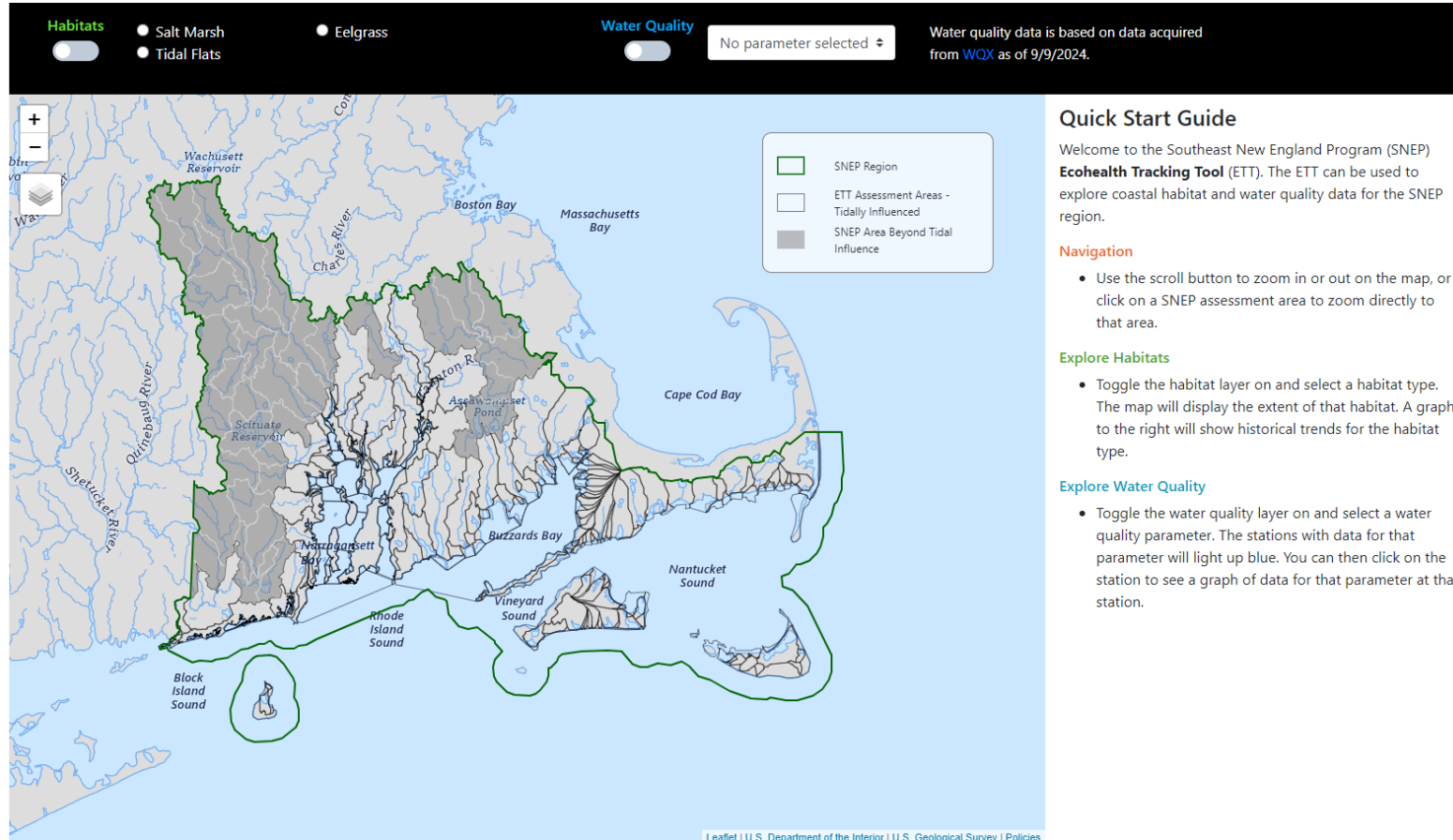
Hide Quick Start Guide

Data Sources

Learn About the SNEP Region

Learn About Habitats

Learn About Water Quality Parameters



## Quick Start Guide

Welcome to the Southeast New England Program (SNEP) **Ecohealth Tracking Tool** (ETT). The ETT can be used to explore coastal habitat and water quality data for the SNEP region.

### Navigation

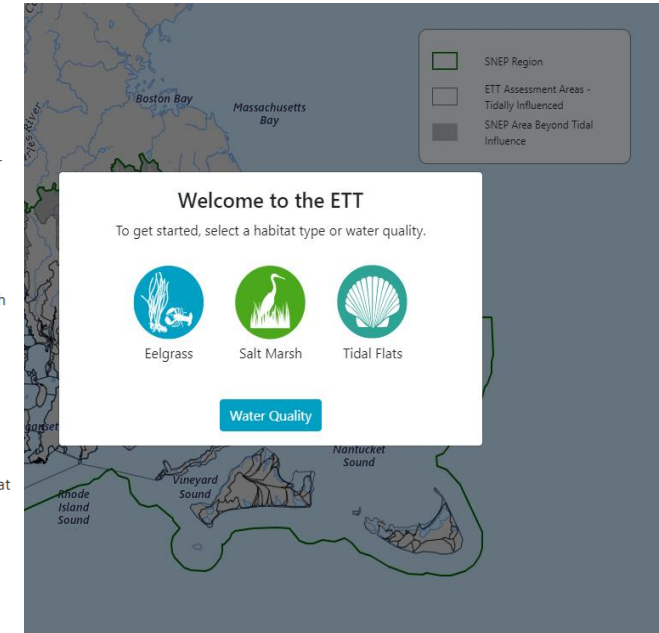
- Use the scroll button to zoom in or out on the map, or click on a SNEP assessment area to zoom directly to that area.

### Explore Habitats

- Toggle the habitat layer on and select a habitat type. The map will display the extent of that habitat. A graph to the right will show historical trends for the habitat type.

### Explore Water Quality

- Toggle the water quality layer on and select a water quality parameter. The stations with data for that parameter will light up blue. You can then click on the station to see a graph of data for that parameter at that station.



## Habitats



Salt Marsh

Tidal Flats

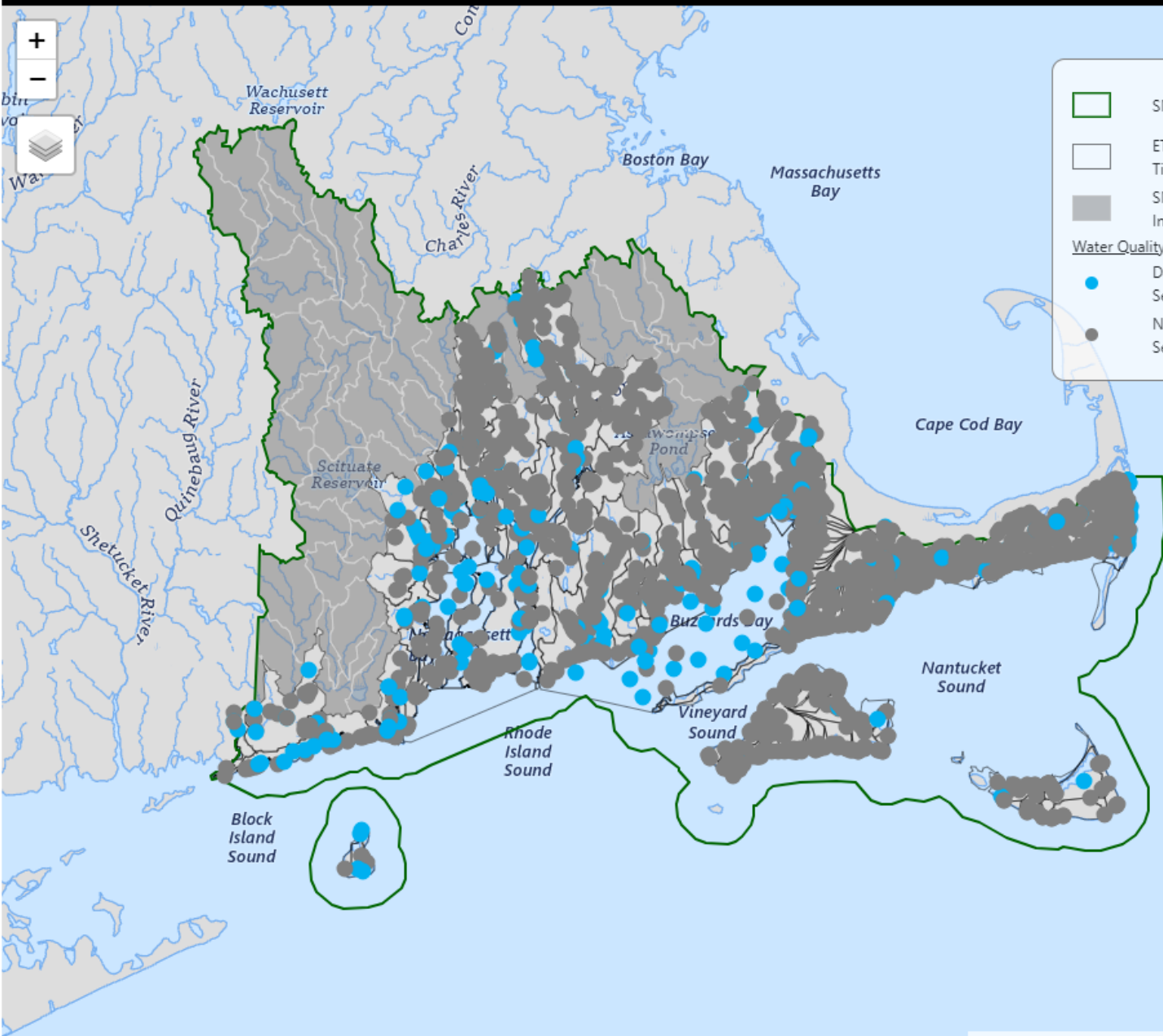
Eelgrass

## Water Quality



Chlorophyll-a

Water quality data is based on data acquired from [WOX](#) as of 9/9/2024.



## Quick Start Guide

Welcome to the Southeast New England Program (SNEP) **Ecohealth Tracking Tool** (ETT). The ETT can be used to explore coastal habitat and water quality data for the SNEP region.

### Navigation

- Use the scroll button to zoom in or out on the map, or click on a SNEP assessment area to zoom directly to that area.

### Explore Habitats

- Toggle the habitat layer on and select a habitat type. The map will display the extent of that habitat. A graph to the right will show historical trends for the habitat type.

### Explore Water Quality

- Toggle the water quality layer on and select a water quality parameter. The stations with data for that parameter will light up blue. You can then click on the station to see a graph of data for that parameter at that station.

Habitats

Salt Marsh

Eelgrass

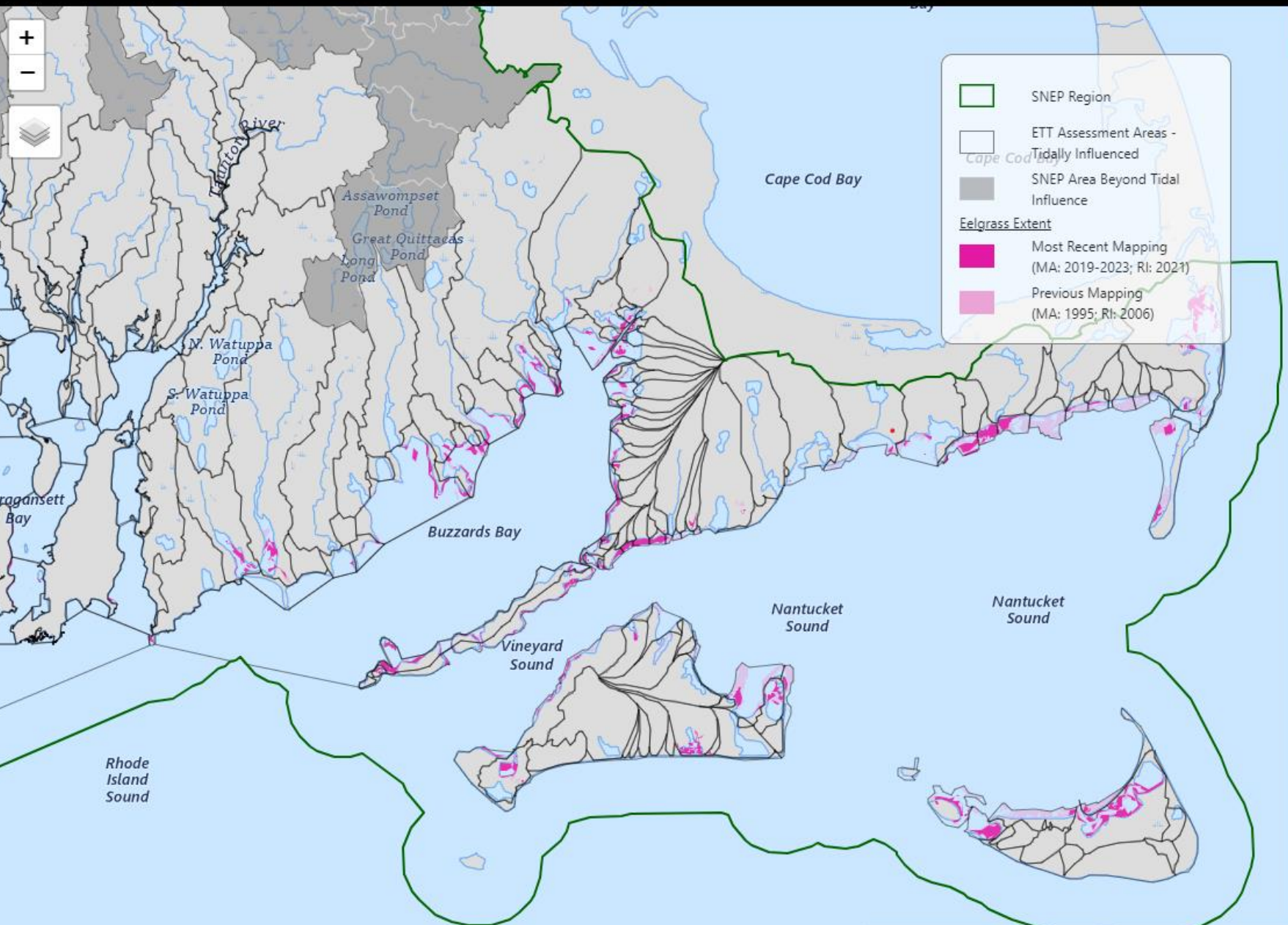
Tidal Flats

Water Quality



Chlorophyll-a

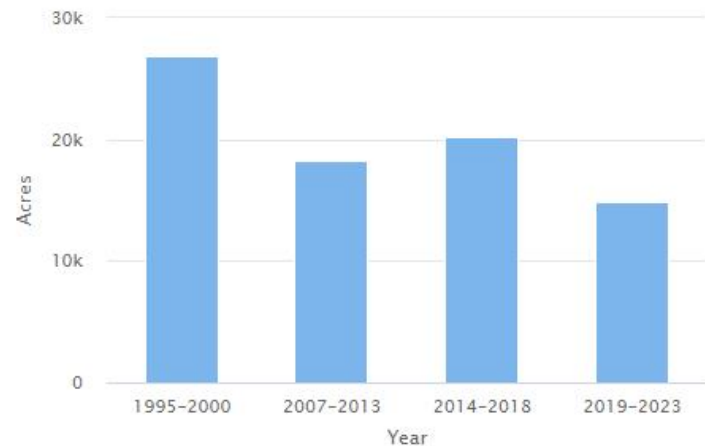
Water quality data is based on data acquired from [WQX](#) as of 9/9/2024.



# Eelgrass



### Eelgrass Extent All Assessment Areas



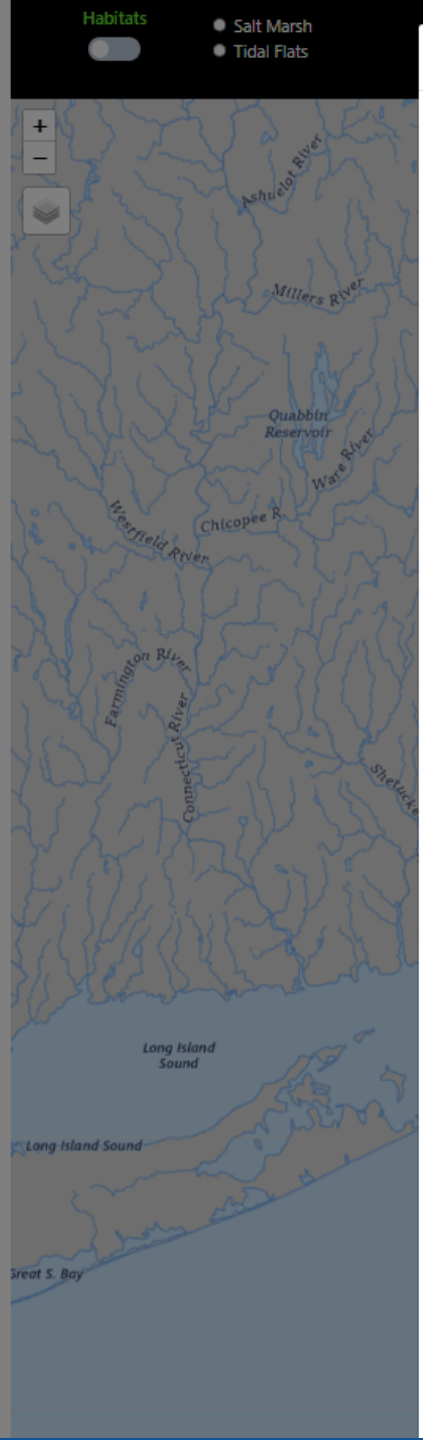
Hide Quick Start Guide

Data Sources

Learn About the SNEP Region

Learn About Habitats

Learn About Water Quality Parameters



### Data Sources

#### Habitat Extent Data

<b>Salt Marsh</b>	<p><b>MA:</b> Most Recent: 2005: <a href="https://www.mass.gov/info-details/massgis-data-massdep-wetlands-2005">https://www.mass.gov/info-details/massgis-data-massdep-wetlands-2005</a> Historic: 1990-2000: <a href="https://www.mass.gov/info-details/massgis-data-massdep-wetlands-original-112000">https://www.mass.gov/info-details/massgis-data-massdep-wetlands-original-112000</a></p> <p><b>RI:</b> Most Recent: 2016: <a href="https://www.rigis.org/datasets/edc:eelgrass-locations-polygons/about">https://www.rigis.org/datasets/edc:eelgrass-locations-polygons/about</a> Historic: 1999: <a href="https://www.rigis.org/datasets/edc:narragansett-bay-estuarine-habitat/about">https://www.rigis.org/datasets/edc:narragansett-bay-estuarine-habitat/about</a></p>
<b>Tidal Flats</b>	<p><b>MA:</b> Most Recent: 2005: <a href="https://www.mass.gov/info-details/massgis-data-massdep-wetlands-2005">https://www.mass.gov/info-details/massgis-data-massdep-wetlands-2005</a> Historic: 1990-2000: <a href="https://www.mass.gov/info-details/massgis-data-massdep-wetlands-original-112000">https://www.mass.gov/info-details/massgis-data-massdep-wetlands-original-112000</a></p> <p><b>RI:</b> Most Recent: 2016: <a href="https://www.rigis.org/datasets/edc:eelgrass-locations-polygons/about">https://www.rigis.org/datasets/edc:eelgrass-locations-polygons/about</a> Historic: 1999: <a href="https://www.rigis.org/datasets/edc:narragansett-bay-estuarine-habitat/about">https://www.rigis.org/datasets/edc:narragansett-bay-estuarine-habitat/about</a></p>
<b>Eelgrass</b>	<p><b>MA:</b> Most Recent: 2015-2017: <a href="https://www.mass.gov/info-details/massgis-data-massdep-eelgrass-2015-2017">https://www.mass.gov/info-details/massgis-data-massdep-eelgrass-2015-2017</a> Historic: 1995: <a href="https://www.mass.gov/info-details/massgis-data-massdep-eelgrass-1995">https://www.mass.gov/info-details/massgis-data-massdep-eelgrass-1995</a></p> <p><b>RI:</b> Most Recent: 2021: <a href="https://www.rigis.org/datasets/edc:submerged-aquatic-vegetation-sav-in-ri-coastal-waters-2021/about">https://www.rigis.org/datasets/edc:submerged-aquatic-vegetation-sav-in-ri-coastal-waters-2021/about</a> Historic: 2006: <a href="https://www.rigis.org/datasets/edc:submerged-aquatic-vegetation-sav-in-ri-coastal-waters-2006/about">https://www.rigis.org/datasets/edc:submerged-aquatic-vegetation-sav-in-ri-coastal-waters-2006/about</a></p>

#### Water Quality Data

Water quality data presented in the Ecohealth Tracking Tool has been acquired from the [Water Quality Portal \(WQP\)](#), a publicly available water-quality database which stores data from the United States Geological Survey (USGS), the Environmental Protection Agency (EPA), and over 400 state, federal, tribal, and local agencies.

- WQP stations located within the Southeast New England Program (SNEP) assessment areas were screened by location type to exclude samples collected at point sources, groundwater wells, and in the atmosphere.
- Water quality samples were screened to exclude:
  - QA/QC samples (duplicates, blanks)
  - Samples collected at or near the bottom of the water column (i.e., depth > 1 m)
  - Samples labeled as rejected
  - Samples reported with non-standard or missing units.
- Non-detect values were replaced with the detection quantitation limit reported in WQP.
- When possible, Total Nitrogen (TN) concentrations were computed as the sum of Total Kjeldahl Nitrogen (TKN) and Nitrite + Nitrate (NO<sub>2</sub>+NO<sub>3</sub>) from samples collected at the same location and time.

#### Image Credits

<b>Website Landing Page</b>	Photo of Marion Harbor from NolanFest 2023, <a href="#">Nolan Gibbons Memorial Fund</a> , "Everybody likes to be themselves"
<b>Learn About Habitats</b>	<i>Salt Marsh</i> : Photo "Great Blue Heron in Salt Marsh" courtesy of Jack Dodson, <a href="#">Dodson Photo and Video</a> <i>Tidal Flat</i> : Photo courtesy of Barbara Heiss and Bob Goodwill
<b>Other</b>	<i>Eelgrass (photo above eelgrass habitat extent graphs)</i> : Photo courtesy of Cornell Cooperative Extension Marine Program

ity data is based on data acquired from [WQP](#) as of 9/9/2024.

### Quick Start Guide

Welcome to the Southeast New England Program (SNEP) Ecohealth Tracking Tool (ETT). The ETT can be used to explore coastal habitat and water quality data.

#### Navigation

- Use the scroll button to zoom in or out of the map. You can also click and drag to zoom directly to that area.

#### Explore Habitats

- Toggle the habitat layer on and select a habitat. The map will show the extent of that habitat. A graph to the right will show the water quality data for that habitat.

#### Explore Water Quality

- Toggle the water quality layer on and select a parameter. The map will show the data for that parameter will light up blue. You can also click and drag to zoom directly to that area. A graph of data for that parameter at that station will be shown.



# Increasing Regional Data Availability

- Most monitoring organizations maintain their own data portals.
- Regional data is segmented by not being easily comparable in a universal format.

## *Contractor Support/Deliverables:*

- Successful upload of historical data from participating partner organizations to WQX.
- Development of saved import configuration for future use
- Education of how to use import configuration for future data collection.

# QAPP Assistance Tool

- Develop a searchable QAPP database
  - Search by keyword
  - Download documents of interest
  - Ability to see if a QAPP has been amended.
  - Maintainable by EPA/SNEP staff

# Ecosystem Services Subcommittee Activities

- Valuation of salt marshes in the SNEP region
- Valuation of urban parks and greenspaces in the SNEP region
- SNEP cranberry bog restoration workshop recap

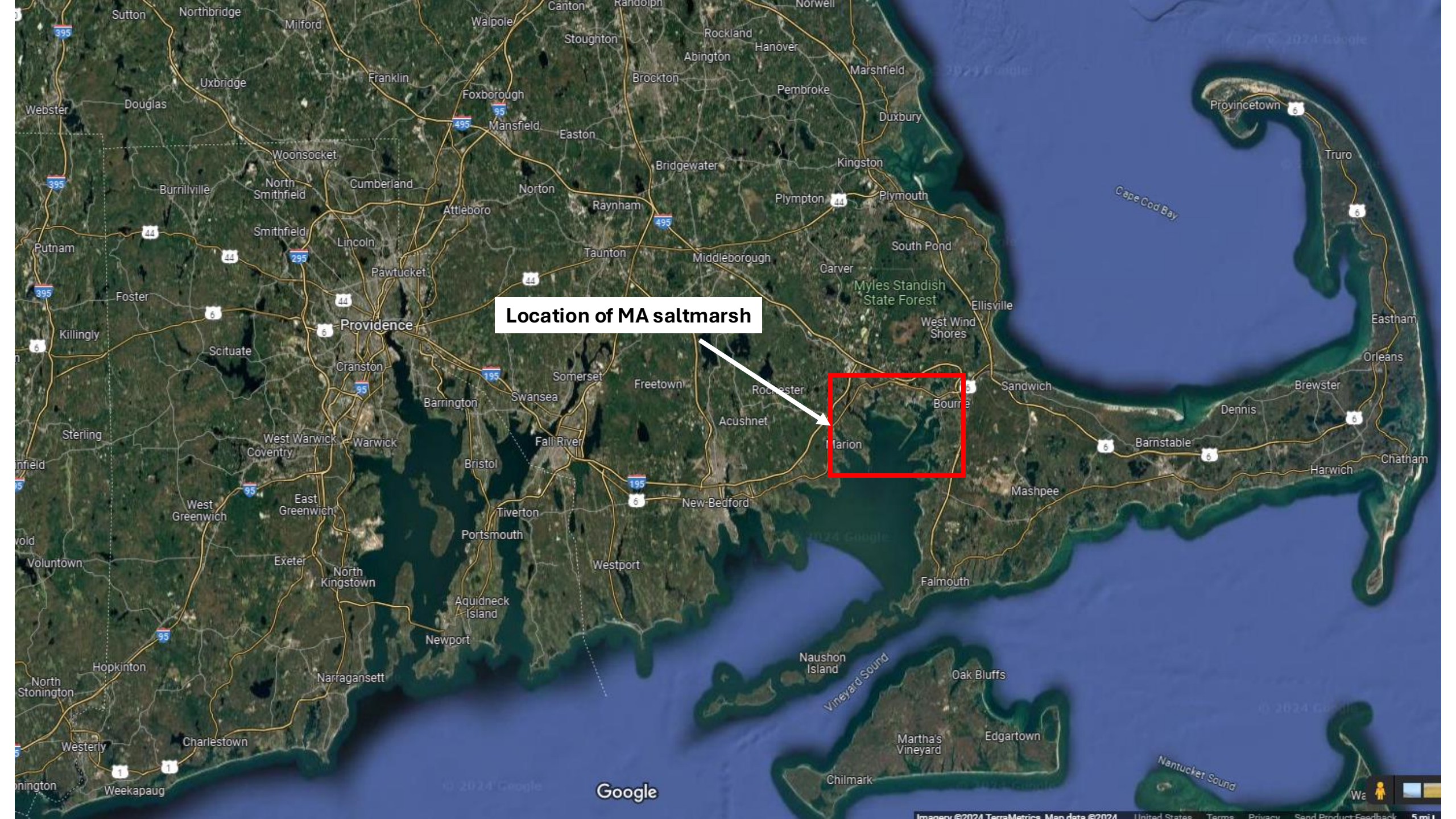
# Waquoit Bay and Surrounding Channels (CC-1)

## Highlights

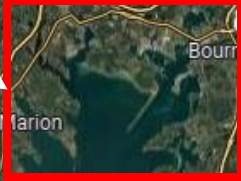
- Barrier system with open waters, sand dunes, barrier beaches. Primarily upland marsh with small mudflat areas. Low and high marsh areas are more prevalent towards the mouth of the bay
- 8,346 acres, 23,960 housing units, 34,794 population
- Tidal range of 2 feet
- NERR, with educational, research, and monitoring programs, as well as recreation opportunities
- Culturally important to the Mashpee Wampanoag. Name is derived from a Wampanoag word meaning “place of light”
- 37 documented osprey nests, protection for piping plovers, least terns, and other species.
- Recreational and commercial fishing opportunities in and around the bay

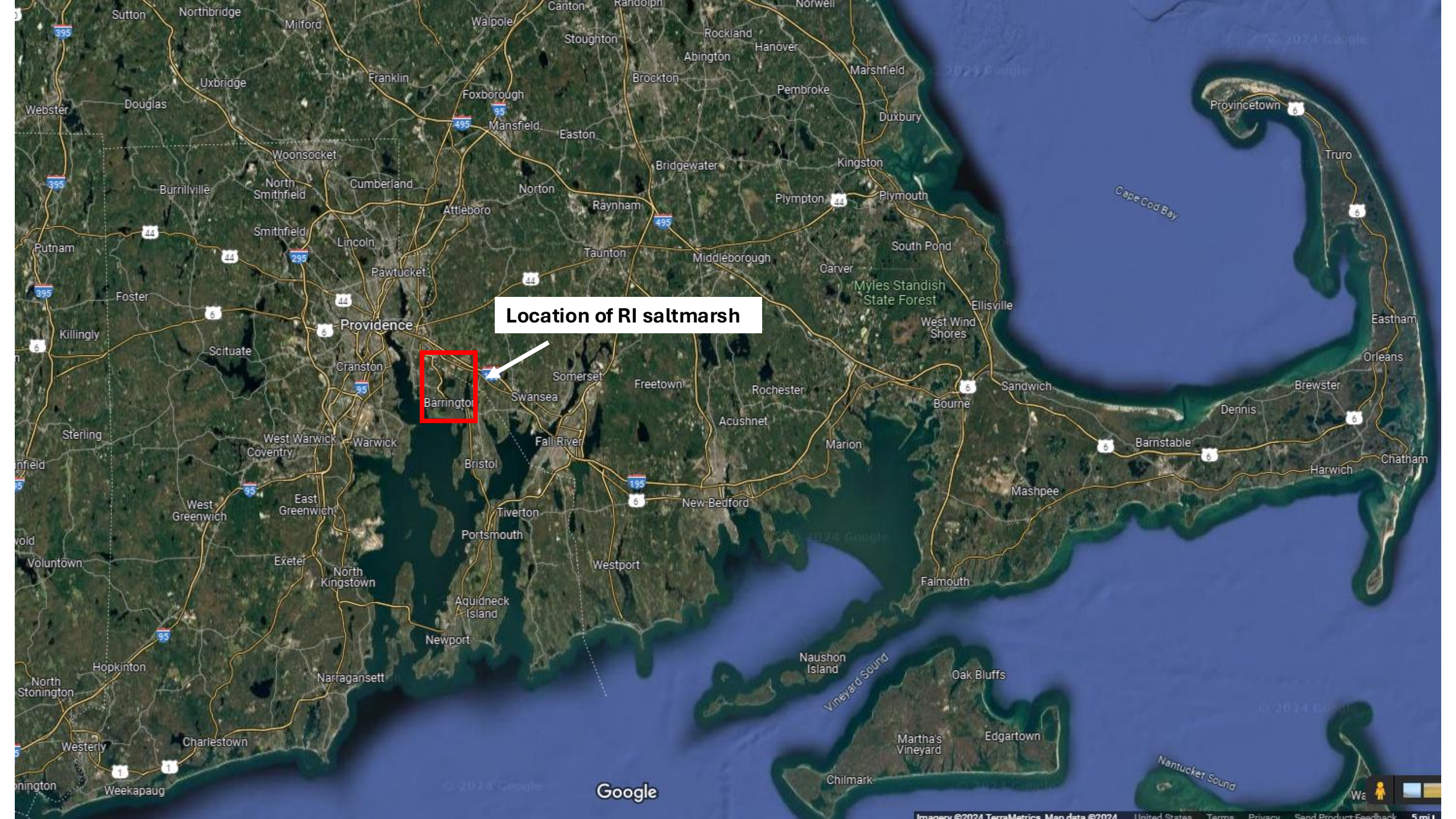


Photo: J. Harrison from WBNERR

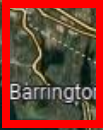


Location of MA saltmarsh

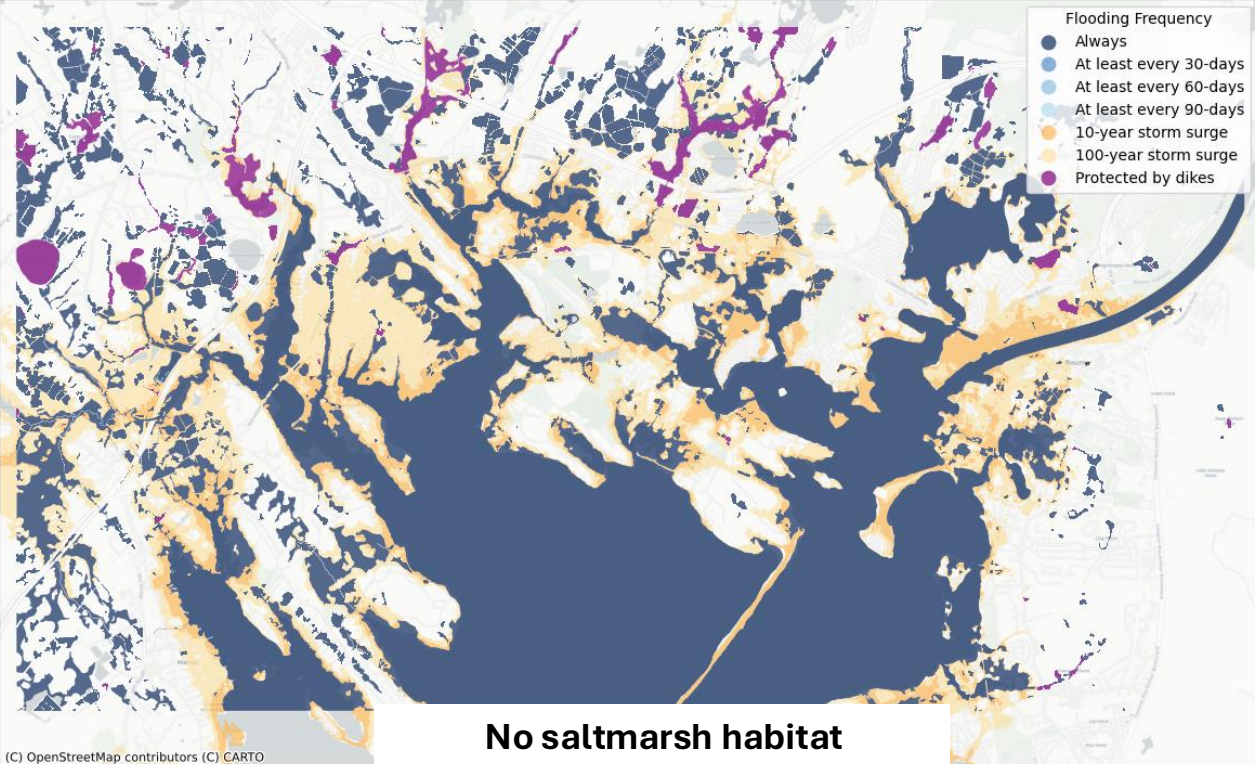
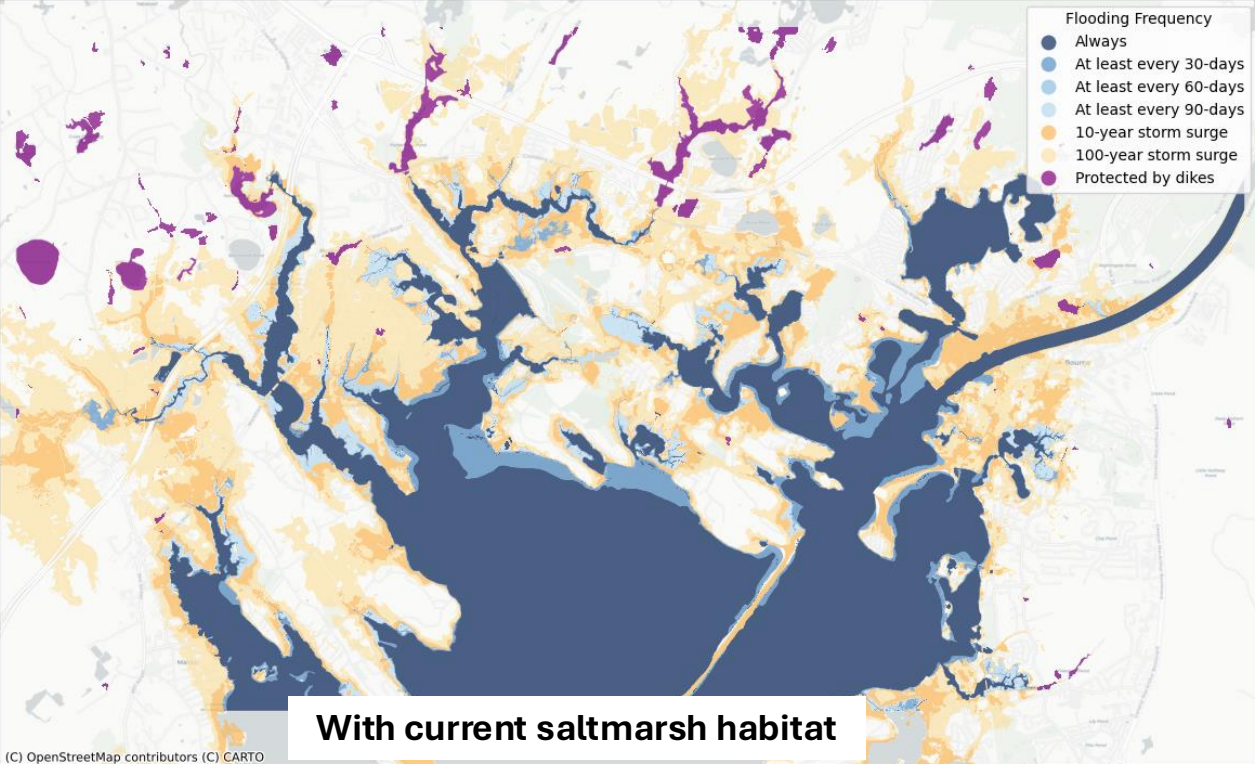




**Location of RI saltmarsh**



# 1 m of Global Sea Level Rise, 2040



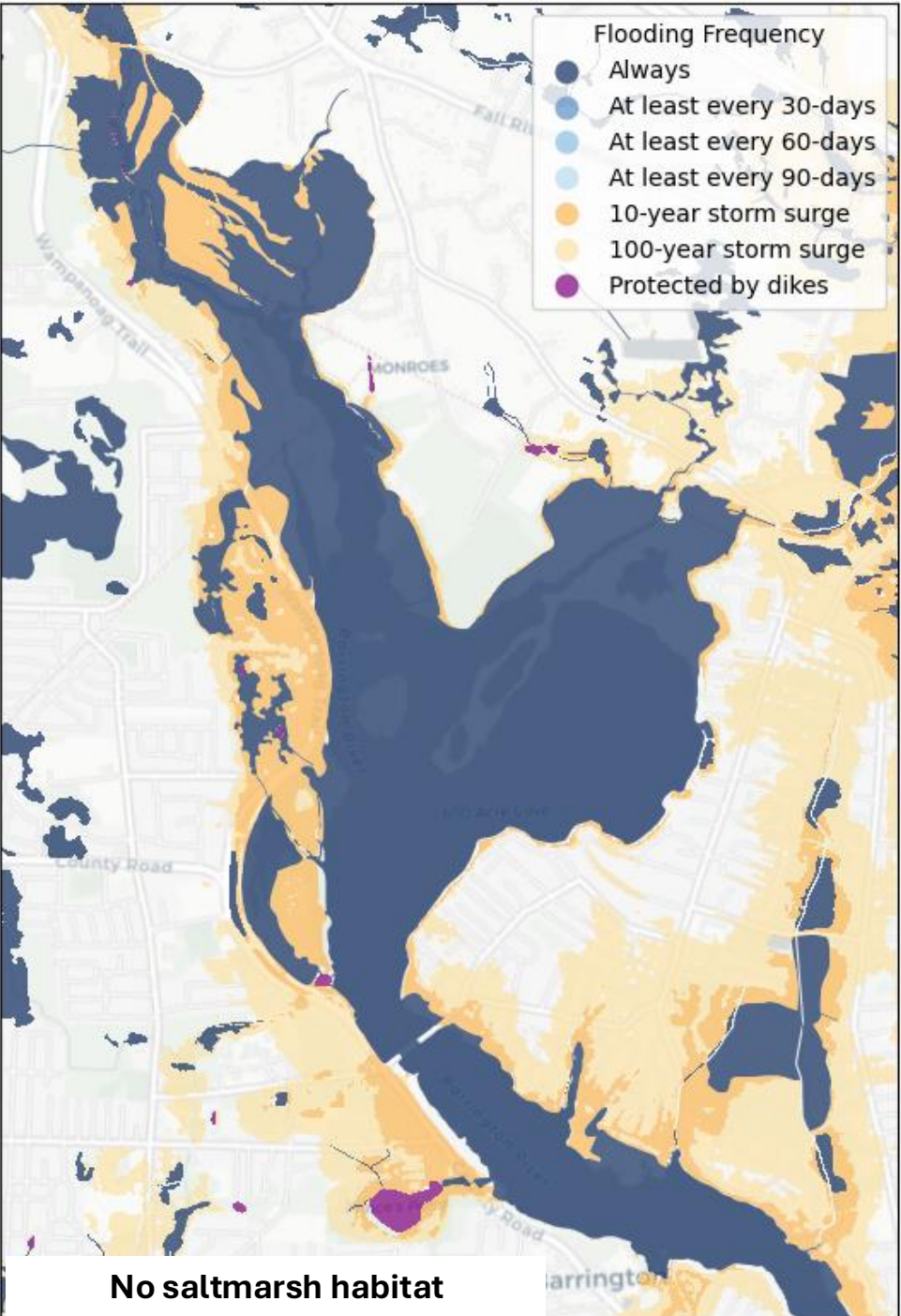
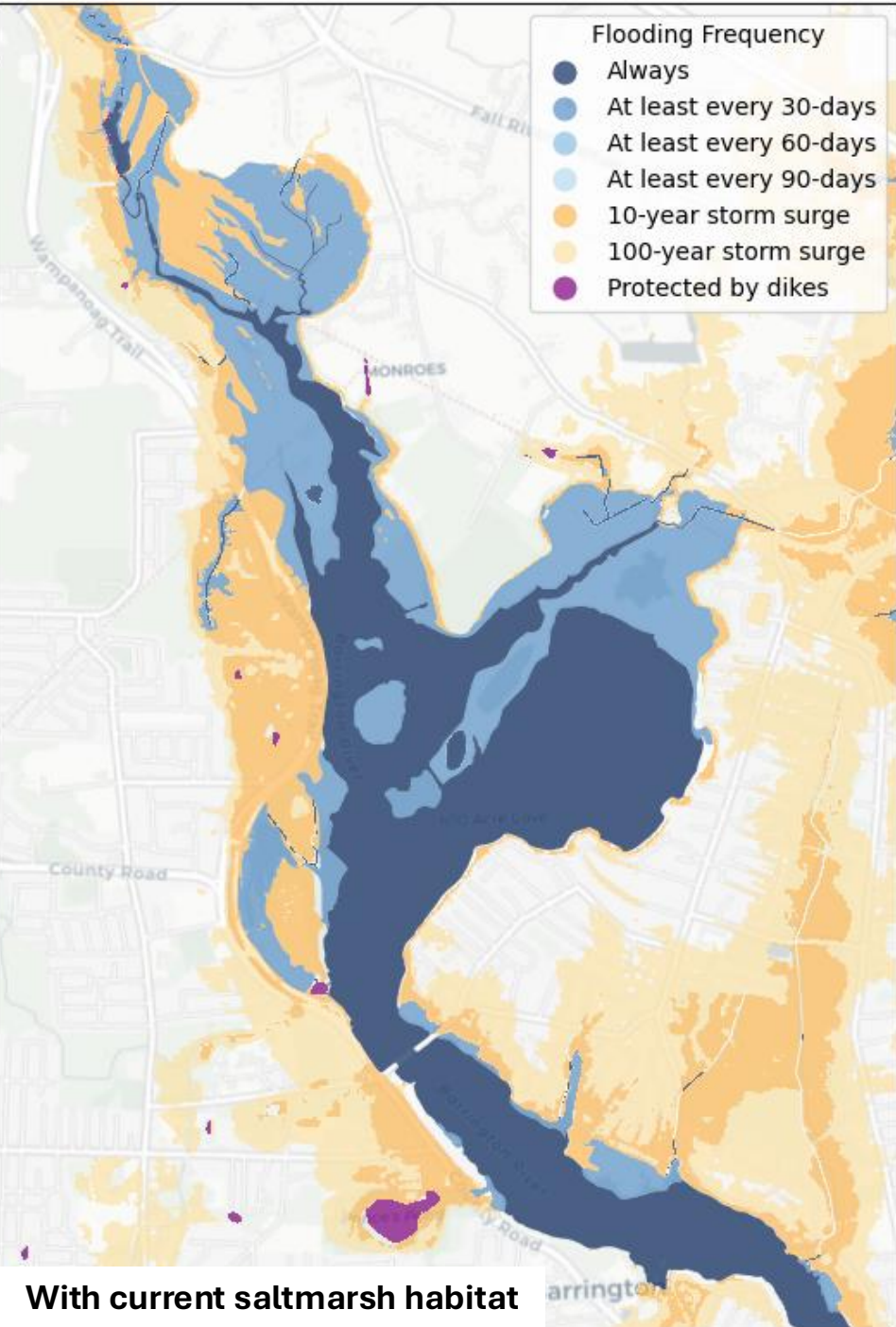
- Flooding Frequency**
- Always
  - At least every 30-days
  - At least every 60-days
  - At least every 90-days
  - 10-year storm surge
  - 100-year storm surge
  - Protected by dikes

- Flooding Frequency**
- Always
  - At least every 30-days
  - At least every 60-days
  - At least every 90-days
  - 10-year storm surge
  - 100-year storm surge
  - Protected by dikes

1 m of  
Global Sea  
Level Rise,  
2040

**With current saltmarsh habitat**

**No saltmarsh habitat**





# Ecosystem Services Subcommittee Habitat Valuation Contracts

- Upcoming focus: Urban parks and greenspaces



# SNEP PRESENTS

Southeast New England Program



CRANBERRY BOG RESTORATION WORKSHOP

**CASE STUDIES AND OPPORTUNITIES TO  
MAXIMIZE ECOLOGICAL BENEFITS**

---

SEPTEMBER 12, 2024

Website: [www.epa.gov/snep](http://www.epa.gov/snep) | Email: [SECoastalNE@epa.gov](mailto:SECoastalNE@epa.gov)

# State of the Region Report

- Timing and next steps
- Selection of representative waterbodies
  - Narragansett Bay Watershed
  - Buzzards Bay Watershed
  - Cape Cod, and
  - The Islands (Martha's Vineyard, Elizabeth Islands, Block Island, and Nantucket)
- Call for advisory committee

# Discussion: Building Resilience to Climate Impacts in the Region

- Highlight – Cape Cod Commission
- What do partner see as major needs?
- What are partners doing to address needs?
- What are opportunities for collaboration among partners?

# Next Steps

- Priority topics for next meeting
  - State of the Region Report
  - Program Targets
- Volunteers to host next meeting
- Meeting schedule – set regular/recurring times?



Thank you!